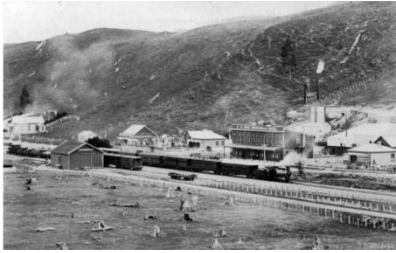


# FRIENDS OF MAURICEVILLE INC



## WHO ARE THE FRIENDS OF MAURICEVILLE.

A committee was formed in 2008 to coordinate efforts to restore and maintain history of the Mauriceville & surrounding districts. An AGM is held each year to appoint the committee for financial year ending 31 March. A membership fee of \$10 per year to build a solid foundation to the Incorporated Society.

## WHAT ARE SOME OF THE PROJECTS COMPLETED.

- Restoration of the external buildings of Mauriceville West School
- Build a shelter at the Mauriceville Cemetery (Previously known as Lutheran cemetery).
- Erect signage at Kopuaranga Hall & Hastwell Hall road showing historic sites in the district.
- Erect a sign on corner of North, South & West Roads showing original settler sections.

## PROJECTS UNDERWAY OR PLANNED FOR FUTURE.

- To maintain previously erected monuments and signs around the district.
- Develop the internal part of Mauriceville West School to become a community centre.
- Design a map of Mauriceville cemetery and have names of those buried on site. Then erect sign in shelter.
- To prepare a sign in the Cemetery shelter showing the History of the site and Lutheran church.
- Look at a new path up to and into the Mauriceville cemetery.
- Look at having some signage for the early settlers original sections.
- Research information on Historic sites around Mauriceville and publish on website.
- Develop an interactive website on [www.mauriceville.nz](http://www.mauriceville.nz)
- To have a stall at the Mauriceville Fair to promote the group and membership.

## MEMBERSHIP.

Is open to anyone and an annual fee of \$10. The financial year runs from 1<sup>st</sup> April to 31<sup>st</sup> March. New members & renewals are paid through internet banking to 06-0689-0278183-00

## CONTACTS

Secretary/Treasurer -	Peter Christensen	027 2818550	<a href="mailto:p.christensen@xtra.co.nz">p.christensen@xtra.co.nz</a>
Mail Address	6 Wycliffe Place, Solway, Masterton.		
Media	Lisa Whiteman	021 993906	<a href="mailto:FOM@mauriceville.nz">FOM@mauriceville.nz</a>

## MEDIA

Website	<a href="http://www.scandinaviantrail.org.nz">www.scandinaviantrail.org.nz</a>
Website	<a href="http://www.mauriceville.nz">www.mauriceville.nz</a>
Facebook	Friends of Mauriceville.