

Friends of Mauriceville Inc. Newsletter #3

New Pacific Studio Mount Bruce, RD 1, Masterton, New Zealand: www.newpacificstudio.org

64-6-375-8441; fax (06)375-8461; email: newpacificstudio@xtra.co.nz

20 January, 2011

Dear Friends of Mauriceville:

Warm greetings and an invitation to the following meetings/events

Calendar 2011

Friday 28 January Mauriceville West School, (alternate is Lutheran church)
7 pm Committee Meeting on signage for Kopuaranga and Mauriceville districts. Final decisions will be made on what signs to go where to ensure grants funds are spent by March 30. All members warmly invited.

Thursday 24 February Herbert Gallery, Eketahuna. 5.30pm- 7.30 pm

Launch of

Heart of the Forest: Early Scandinavian Families, curated by Bridget Wellwood and sponsored by Friends of Mauriceville Inc with funding from Tararua District Council. (Exploring the collections of the Eketahuna and District Museum first started by Miss Alice Anderson, daughter of Anders and Johanna Anderson from Sweden). Runs until ~~April~~ ^{March} 11.

Friday 25 February Official Opening of 2011 Scandinavian Festival, organized by the Scandinavian Club of Manawatu Inc.

Mix and Mingle from 6pm for 7pm Town Hall, Dannevirke

Continuous supper. \$35 per person. Register at

www.scandinavianfestival.org.nz or write to Jean Thompson, Convenor,
31 Greenwood Place, Palmerston North 4410. Phone 06 357 2556; mob 0275 443 972 email: onky@inspire.net.nz

The evening's programme includes the launch of *Whispering Roads. A Wellington to Napier Scandinavian Trail*, produced by KF for Friends of Mauriceville. Sponsors include Trust House Trust, Tararua District Council, Wellington City Council, Eastern and Central Community Trust, and Creative Communities Tararua.

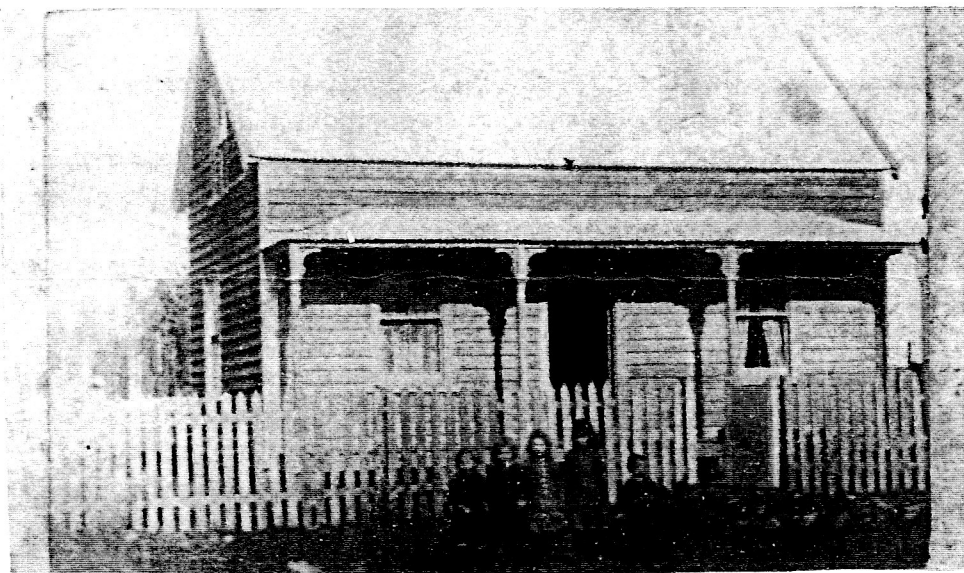
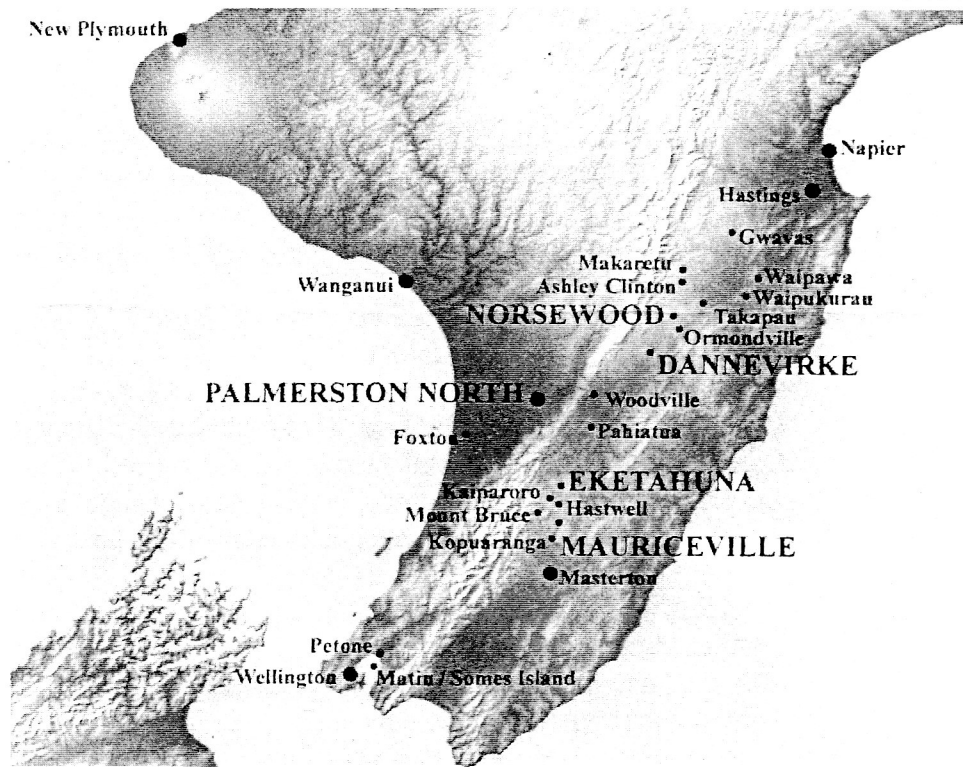
(Available both as a brochure and as a book with many photographs, we hope.) Best-selling author **Jenny Pattrick** will give a short talk.

Working on this exciting project has kept me very busy over the past four months, with a month still to go. I hope you'll be pleased with the results. It's just a first attempt to tell the big story, and it is sure to keep growing in coming years. The book version also includes a number of personal stories and anecdotes, including the story of Per and Elna Nilsson and the limestone monument erected in their memory by their great-grandson Gray Nelson. This map by Adam Simpson of the Wairarapa Archive highlights the five original Scandinavian settlements. Now we need to improve our signage on the ground.

A second newsletter will appear this year in April, reporting on the above.
 We also invite you to send annual membership renewals of \$10 to the Chairman and
 Treasurer, Harold Devenport, Kaiparoro-Opaki Rd., Masterton.

Warmly

Kay Flavell, Secretary
 Friends of Mauriceville Inc



Cottage of George Franklin and Agnes Gundersen Franklin, Kopuaranga. Courtesy Lynda Robinson